

Product Overview

Large Bar with Wrap Corner

Mobile outdoor bar with ice well, removable speed rails, counter, drawers and bar sink.

Unit Dimensions (l w h, lbs)

100" x 44" x 46", 850 lbs

Ship Dimensions (l w h, lbs)

108" x 52" x 50", 1150 lbs

Standard Features

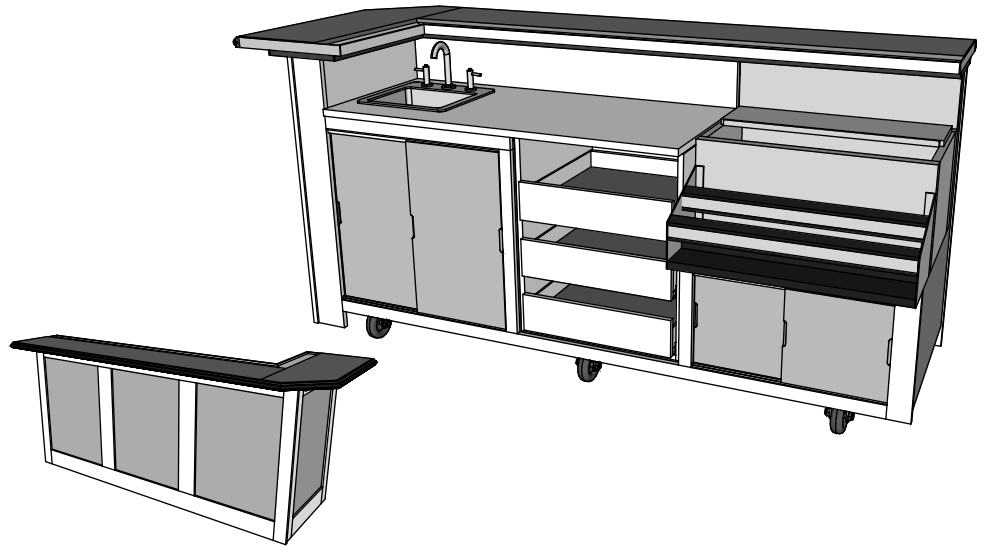
Ipe hardwood construction
 Heavy duty 4"x2" casters
 Locking front casters
 Locking sliding doors
 Under island storage
 Granite top
 Glasstender 30" Ice Well with double speed rails
 Drawers
 Bar Sink with counter

Common Uses

Bar

9028X Sink and Ice Well Bar Wrap

DESIGNER SERIES EXTERIOR



Options & Accessories

Stock Counters (group a)

- Dark Granite Light Granite
- Solid White Solid Almond
- Other Counter*

Stock Panel Inserts (group a)

- White Acrylic Red Acrylic
- Wood Light Fabric
- Dark Fabric
- Other Panel Insert*

Stock Panel Frames

- Ipe Starboard White
- Starboard Brown

Common Accessories

- Cover
- Umbrella Holder - L R
- Hot water heater
- Self contained water

*see options specifications sheet

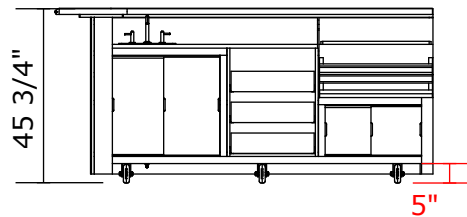
**L/R as seen from operator

Customer Approval

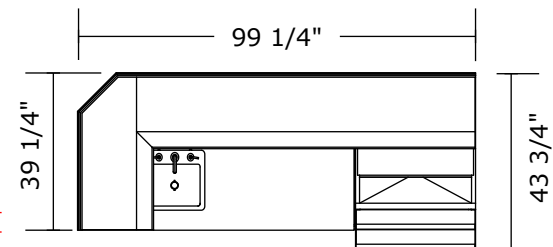
By _____

Date _____

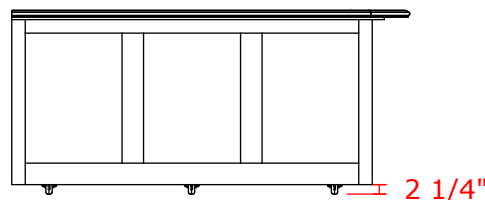
Front



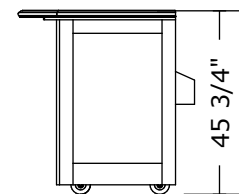
Top



Back



Side



Note: colors, finishes and weights will vary based on options chosen; bars depicted with standard 18" granite bar top with left hand cornered wrap and drink rail. 12" narrow bar top, right wrap and double wrap available as special order.