

Product Overview

Large Bar with Wrap Corner

Mobile outdoor bar with two ice wells, removable speed rails and bar sink.

Unit Dimensions (l w h, lbs)

100" x 44" x 46", 850 lbs

Ship Dimensions (l w h, lbs)

108" x 52" x 50", 1150 lbs

Standard Features

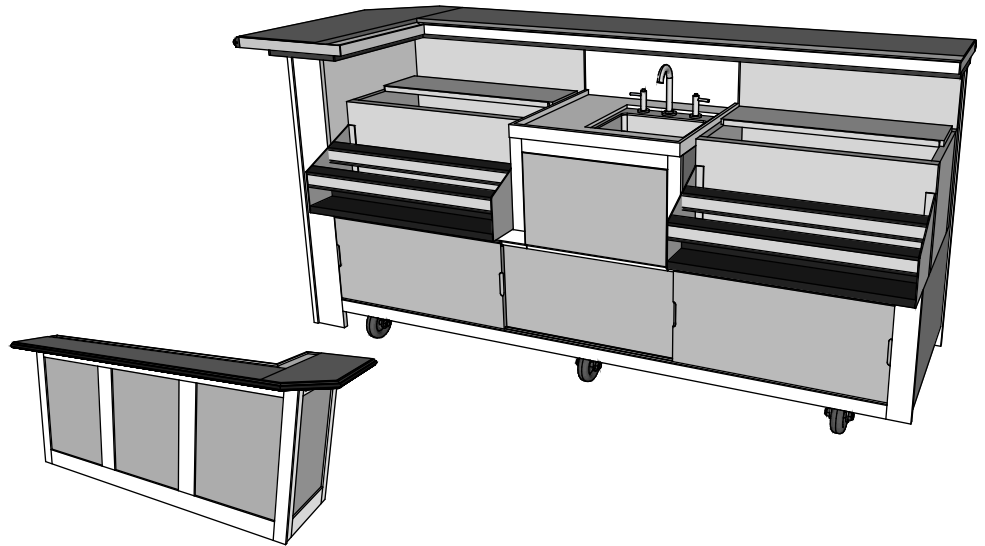
Ipe hardwood construction
 Heavy duty 4"x2" casters
 Locking front casters
 Locking sliding doors
 Under island storage
 Granite top
 2 Glasstender 30" Ice Well with double speed rails
 Bar Sink

Common Uses

Bar for 2 Bartenders

9028X Double Ice and Sink Bar Wrap

DESIGNER SERIES EXTERIOR



Options & Accessories

Stock Counters (group a)

- Dark Granite Light Granite
- Solid White Solid Almond
- Other Counter*

Stock Panel Inserts (group a)

- White Acrylic Red Acrylic
- Wood Light Fabric
- Dark Fabric
- Other Panel Insert*

Stock Panel Frames

- Ipe Starboard White
- Starboard Brown

Common Accessories

- Cover
- Umbrella Holder - L R
- Hot water heater
- Self contained water

*see options specifications sheet

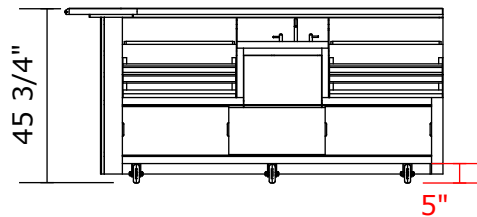
**L/R as seen from operator

Customer Approval

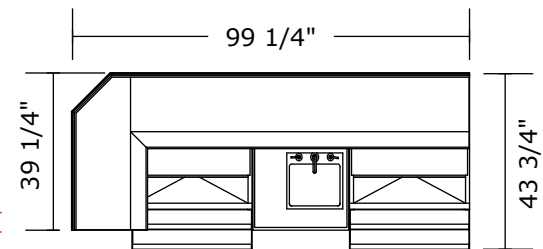
By _____

Date _____

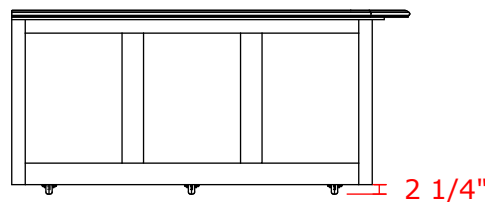
Front



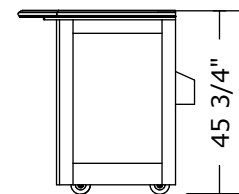
Top



Back



Side



Note: colors, finishes and weights will vary based on options chosen; bars depicted with standard 18" granite bar top with left hand cornered wrap and drink rail. 12" narrow bar top, right wrap and double wrap available as special order.