

## Product Overview

### Large Bar with Wrap Corner

Mobile outdoor bar with two ice wells, removable speed rails, counter and drawers.

### Unit Dimensions (l w h, lbs)

100" x 44" x 46", 850 lbs

### Ship Dimensions (l w h, lbs)

108" x 52" x 50", 1150 lbs

### Standard Features

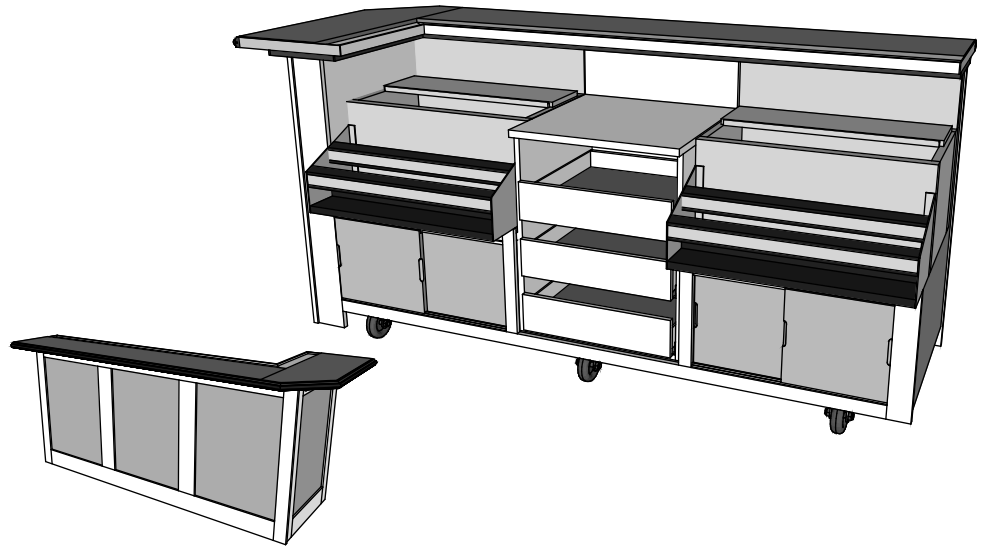
Ipe hardwood construction  
Heavy duty 4"x2" casters  
Locking front casters  
Locking sliding doors  
Under island storage  
Granite top  
2 Glasstender 30" Ice Well with double speed rails  
Drawers

### Common Uses

Bar for 2 Bartenders

# 9028X Double Ice Bar Wrap

## DESIGNER SERIES EXTERIOR



## Options & Accessories

### Stock Counters (group a)

- Dark Granite  Light Granite
- Solid White  Solid Almond
- Other Counter\*

### Stock Panel Inserts (group a)

- White Acrylic  Red Acrylic
- Wood  Light Fabric
- Dark Fabric
- Other Panel Insert\*

### Stock Panel Frames

- Ipe  Starboard White
- Starboard Brown

### Common Accessories

- Cover
- Umbrella Holder - L  R

\*see options specifications sheet

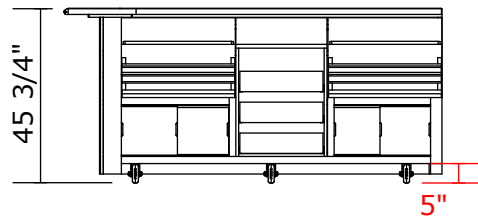
\*\*L/R as seen from operator

## Customer Approval

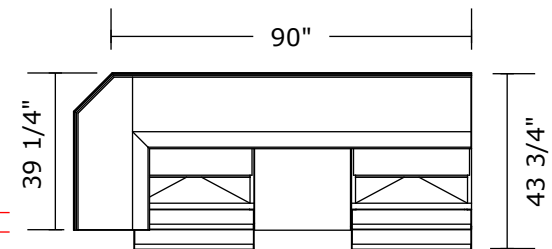
By \_\_\_\_\_

Date \_\_\_\_\_

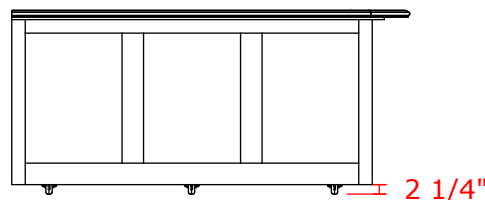
Front



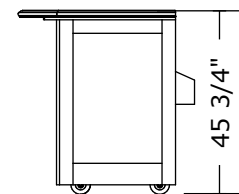
Top



Back



Side



Note: colors, finishes and weights will vary based on options chosen; bars depicted with standard 18" granite bar top with left hand cornered wrap and drink rail. 12" narrow bar top, right wrap and double wrap available as special order.