

## Product Overview

### General Purpose Wait Station

Large mobile outdoor wait station with a high shelf back, sliding doors and interior shelving.

### Unit Dimensions (l w h, lbs)

60" x 28" x 42", 600 lbs

### Ship Dimensions (l w h, lbs)

68" x 36" x 50", 800 lbs

### Standard Features

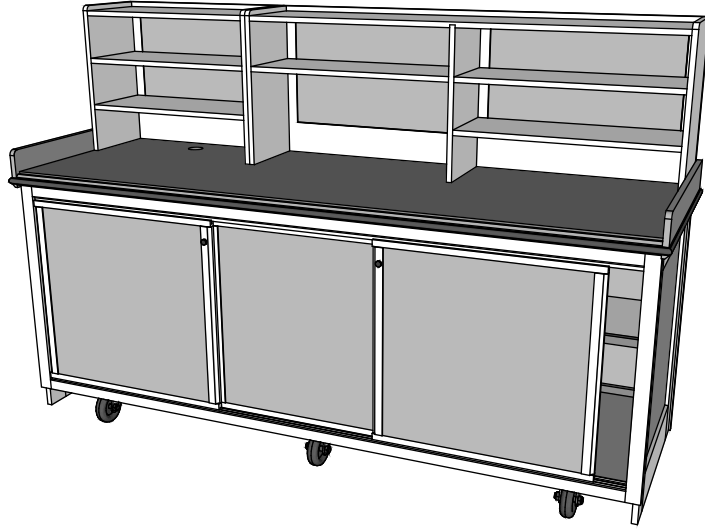
Ipe hardwood construction  
Heavy duty 4"x2" casters  
Locking front casters  
Locking sliding doors  
Under island storage  
Granite top  
High back shelf

### Common Uses

Restaurant Waitstation

# 9028X Wait Station High Back

## DESIGNER SERIES EXTERIOR



## Options & Accessories

### Stock Counters (group a)

- Dark Granite  Light Granite
- Solid White  Solid Almond
- Other Counter\*

### Stock Panel Inserts (group a)

- White Acrylic  Red Acrylic
- Wood  Light Fabric
- Dark Fabric
- Other Panel Insert\*

### Stock Panel Frames

- Ipe  Starboard White
- Starboard Brown

### Common Accesories

- Cover
- Umbrella Holder - L  R
- Menu Rack - L  R

\*see options specifications sheet

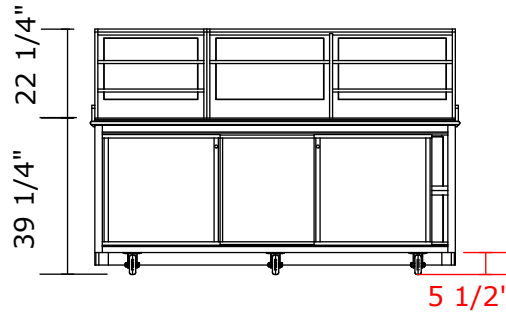
\*\*L/R as seen from operator

## Customer Approval

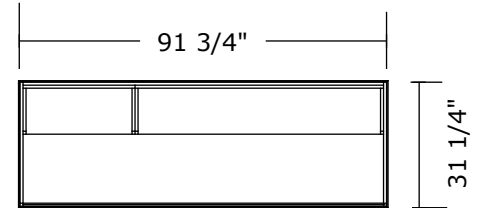
By \_\_\_\_\_

Date \_\_\_\_\_

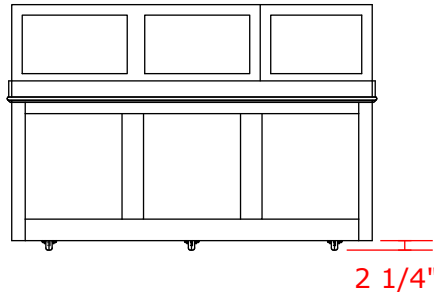
### Front



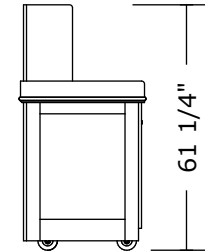
### Top



### Back



### Side



Select units available in 24" depth.

Note: colors, finishes and weights will vary based on options chosen